

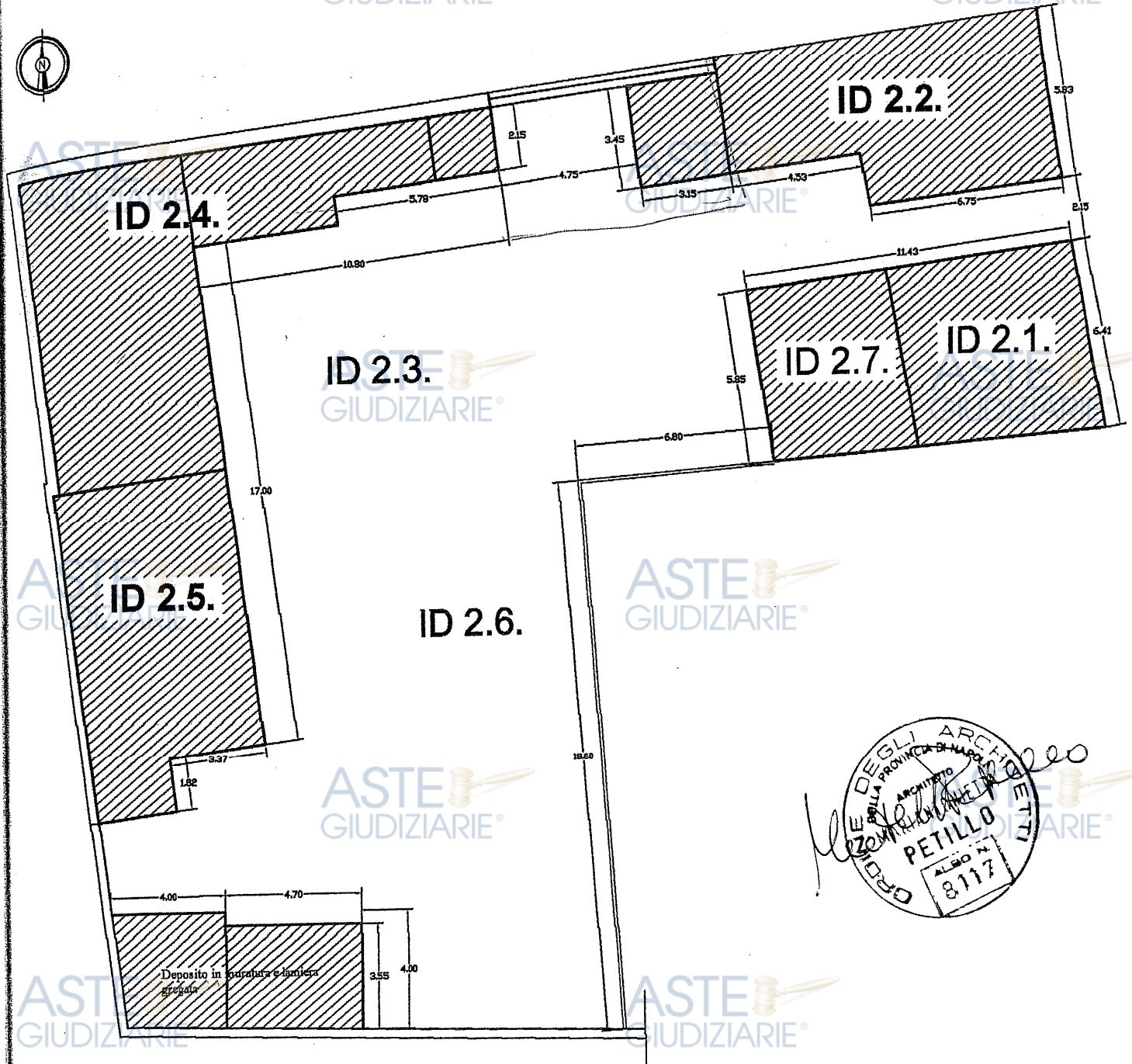


**RAPPRESENTAZIONE GRAFICA  
E FOTOGRAFICA DEI BENI  
ID 2**



# INQUADRAMENTO GENERALE BENI ID2

Pianta d'insieme Corte scala 1/200



# INQUADRAMENTO GENERALE BENI ID2

Pianta d'insieme ID scala 1/200

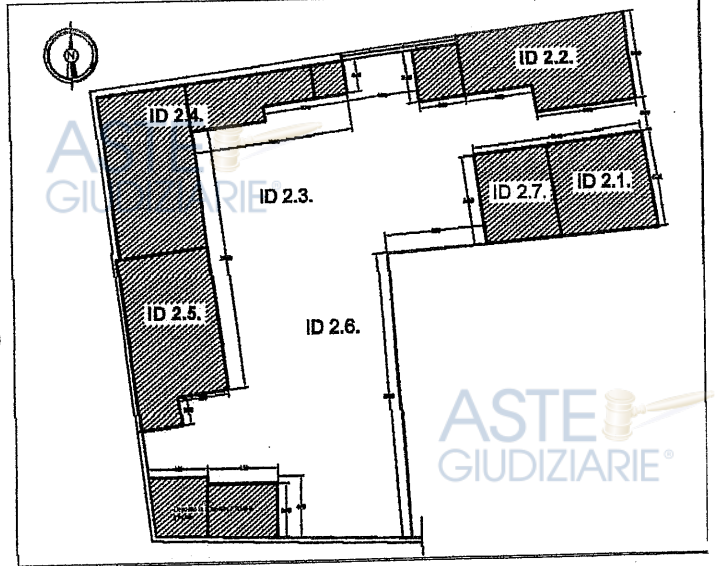


OPERA DEGLI ARCHITETTI  
NELLA PROVINCIA DI NAPOLI  
ARCHITETTO  
*Alfredo Petillo*  
ALFRED PETILLO  
ALBO N.  
8117

**ABITAZIONE ID2.1.**

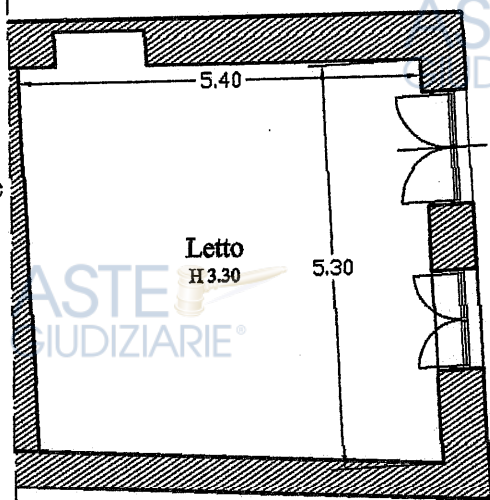


*Inquadramento 1/500*



Viale d'ingresso alla corte comune

Confine ID2.7.

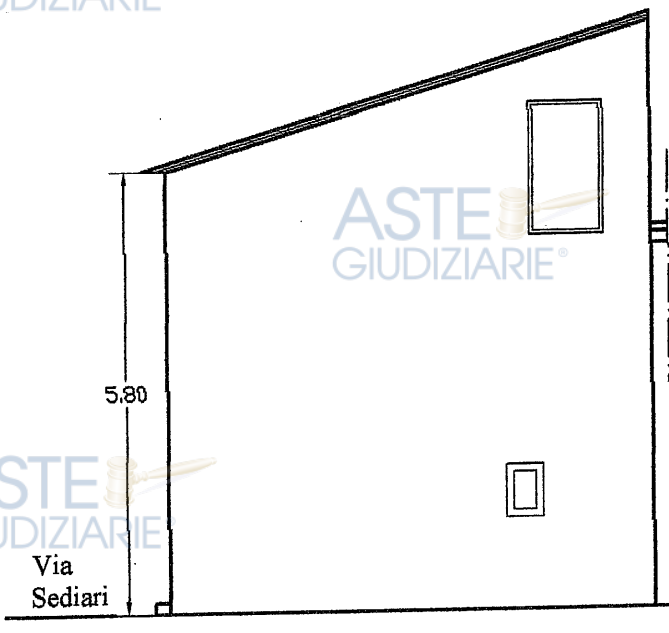


Letto  
H 0.30

Via Sediari

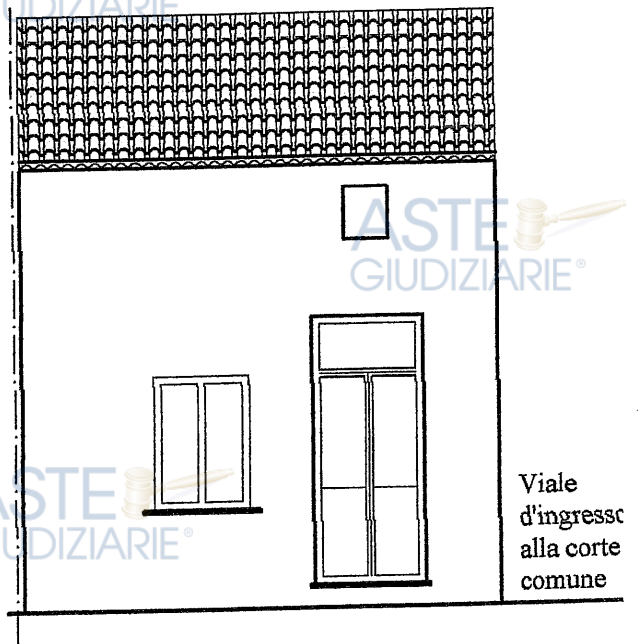
*Nota: soffitta non rilevata  
superf utile stimata in mq 27.50*

*Pianta 1/100*



*Prospetto Lato Nord*

*(Viale Ingresso Corte Comune) 1/100*



*Prospetto Lato Est*

*(Via Sediari) 1/100*

REPORT FOTOGRAFICO ID 2.1

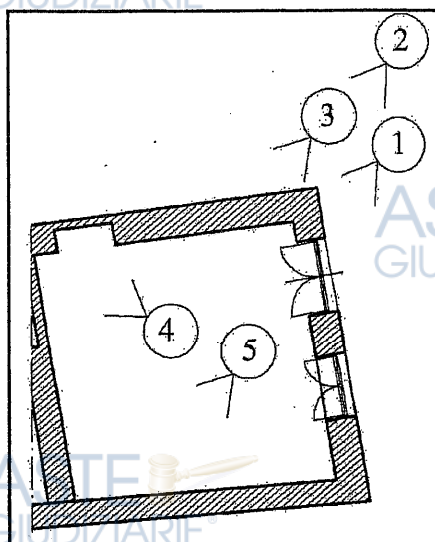
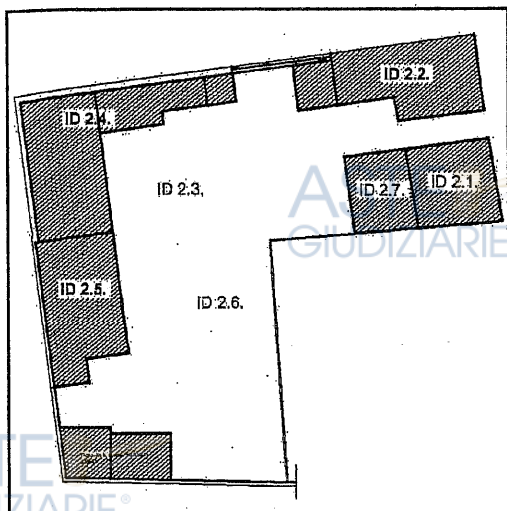


Foto 1



Foto 2



Foto 3



ASTE  
GIUDIZIARIE®

ASTE  
GIUDIZIARIE®

ASTE  
GIUDIZIARIE®

ASTE  
GIUDIZIARIE®

ASTE  
GIUDIZIARIE®

ASTE  
GIUDIZIARIE®

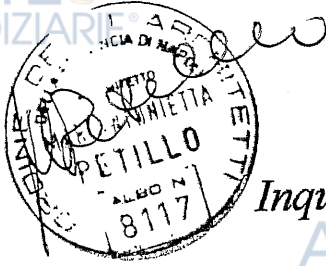
ASTE  
GIUDIZIARIE®

ASTE  
GIUDIZIARIE®

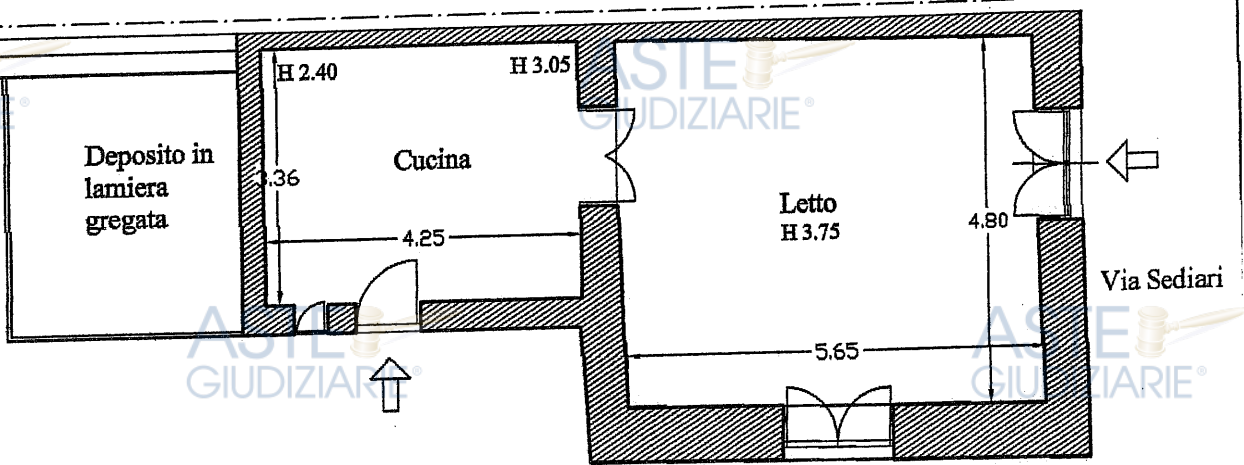
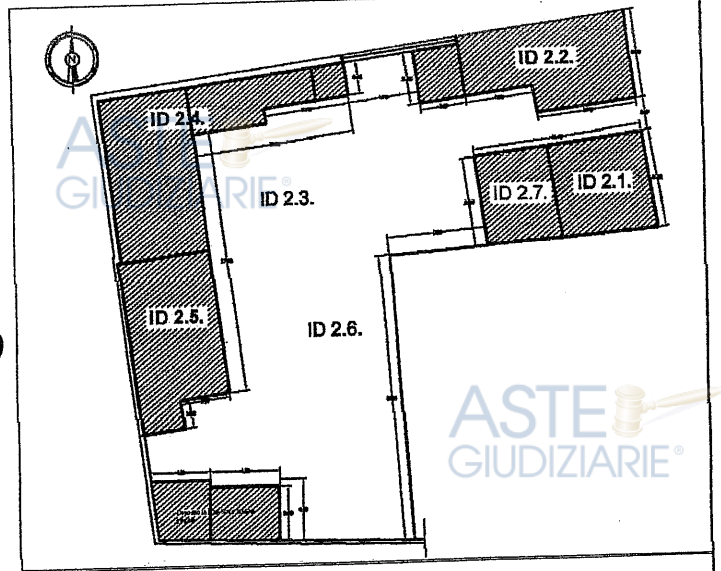
ASTE  
GIUDIZIARIE®

ASTE  
GIUDIZIARIE®

**ABITAZIONE ID2.2.**



Inquadramento 1/500



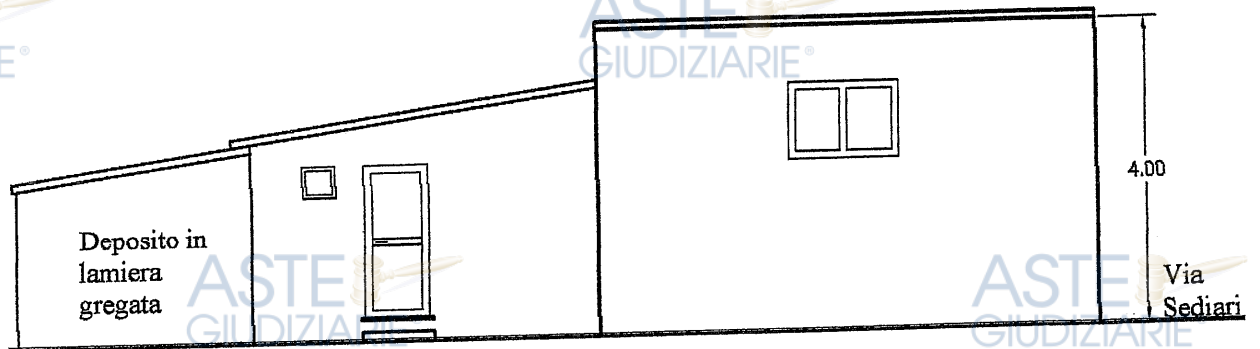
*Pianta*  
1/100

Viale d'ingresso alla corte comune

*Prospetto*  
*Lato Sud*

(Viale Ingresso Corte)

1/100



*Prospetto*  
*Lato Est*

(Via Sediari)

1/100

Viale  
d'ingresso  
alla corte  
comune



REPORT FOTOGRAFICO ID 2.2.

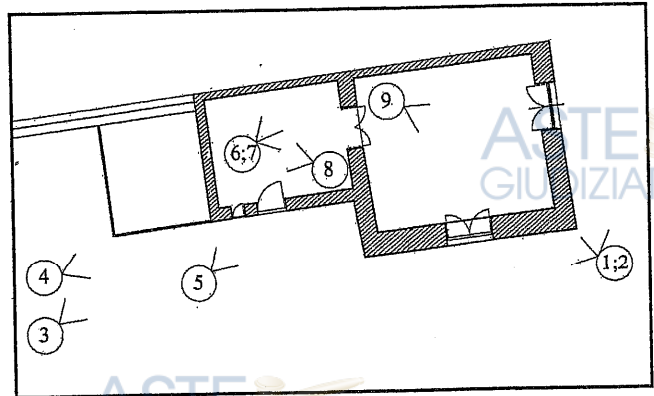
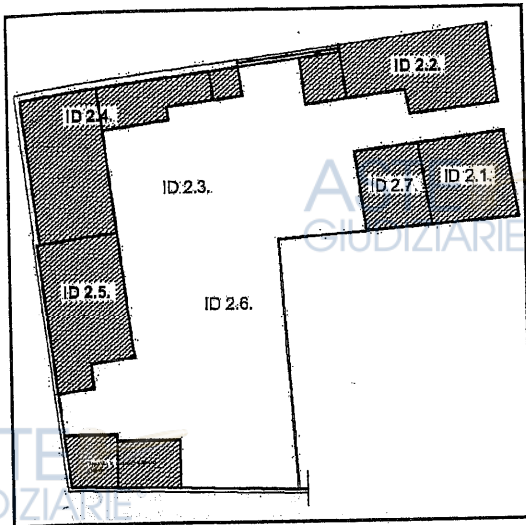


Foto 1



Foto 2



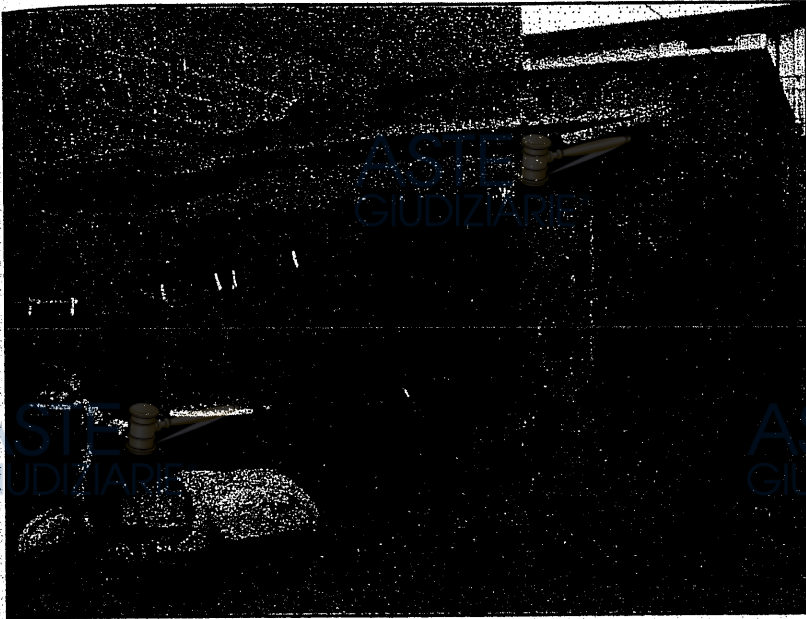


Foto 3



Foto 4

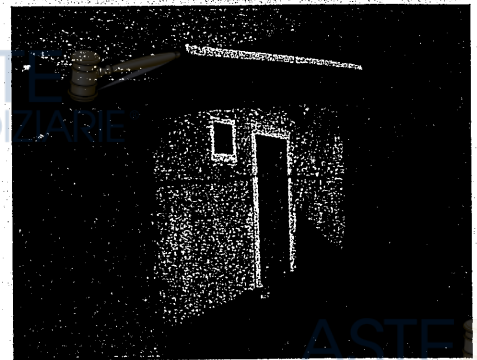


Foto 5

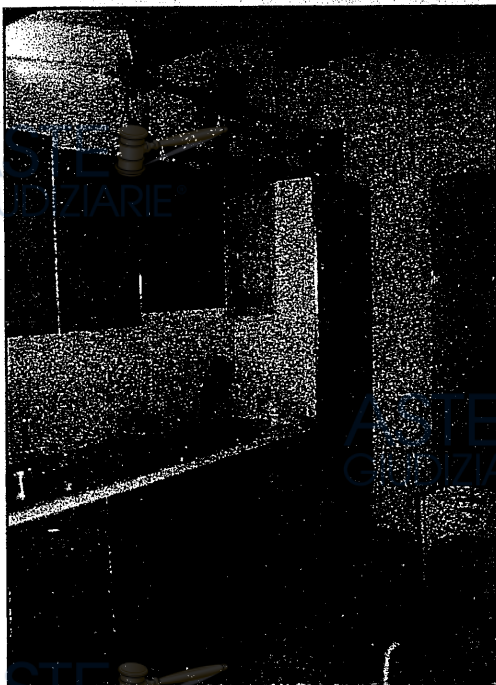


Foto 6



Foto 7



Foto 8



Foto 9

REPORT FOTOGRAFICO ID 2.3. e ID 2.6

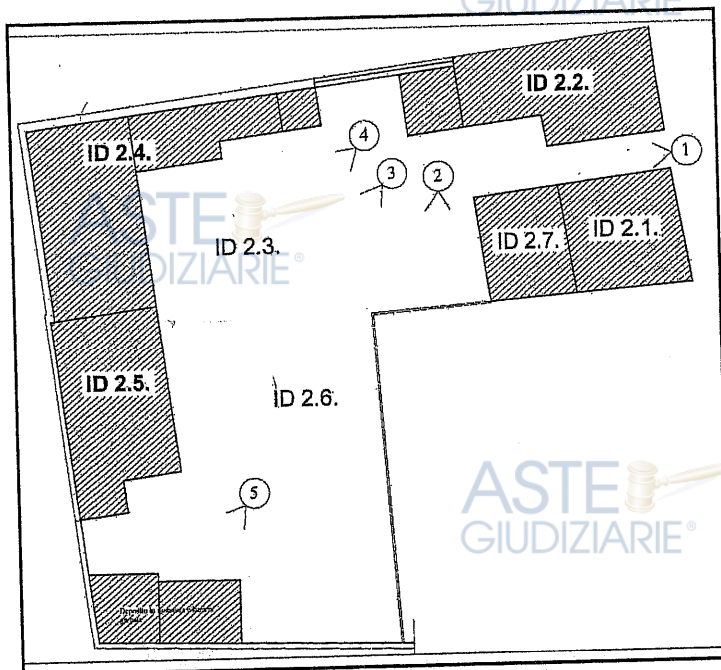


Foto 1

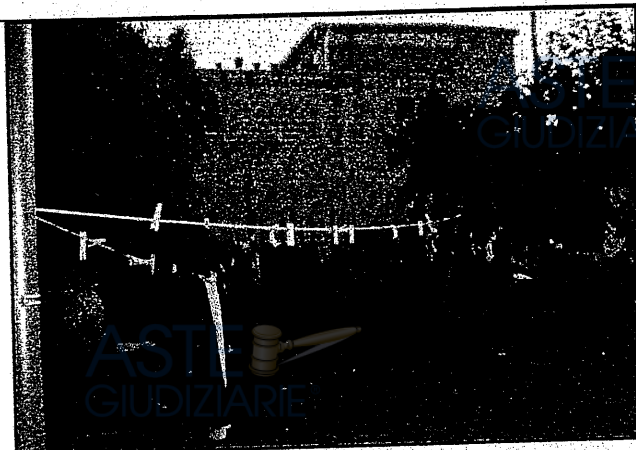


Foto 2



Foto 3



Foto 4

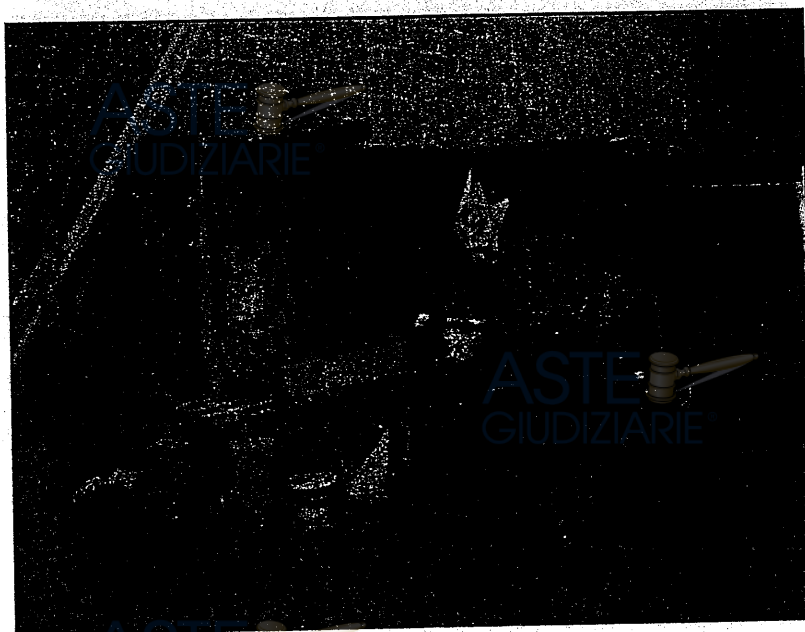
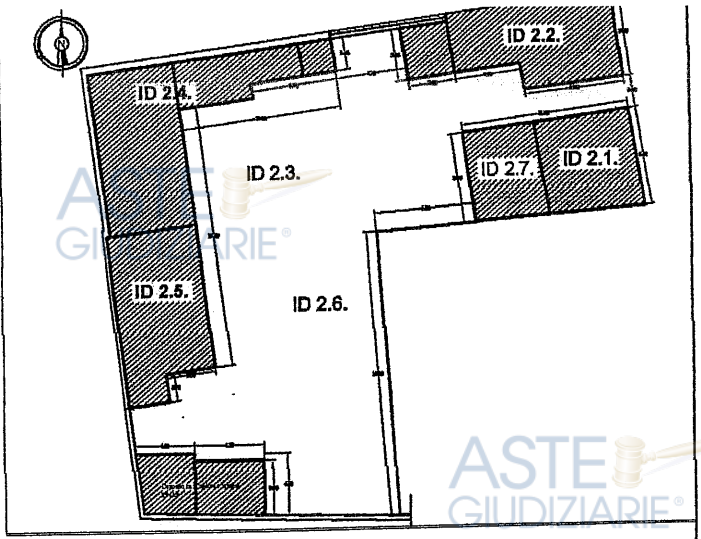


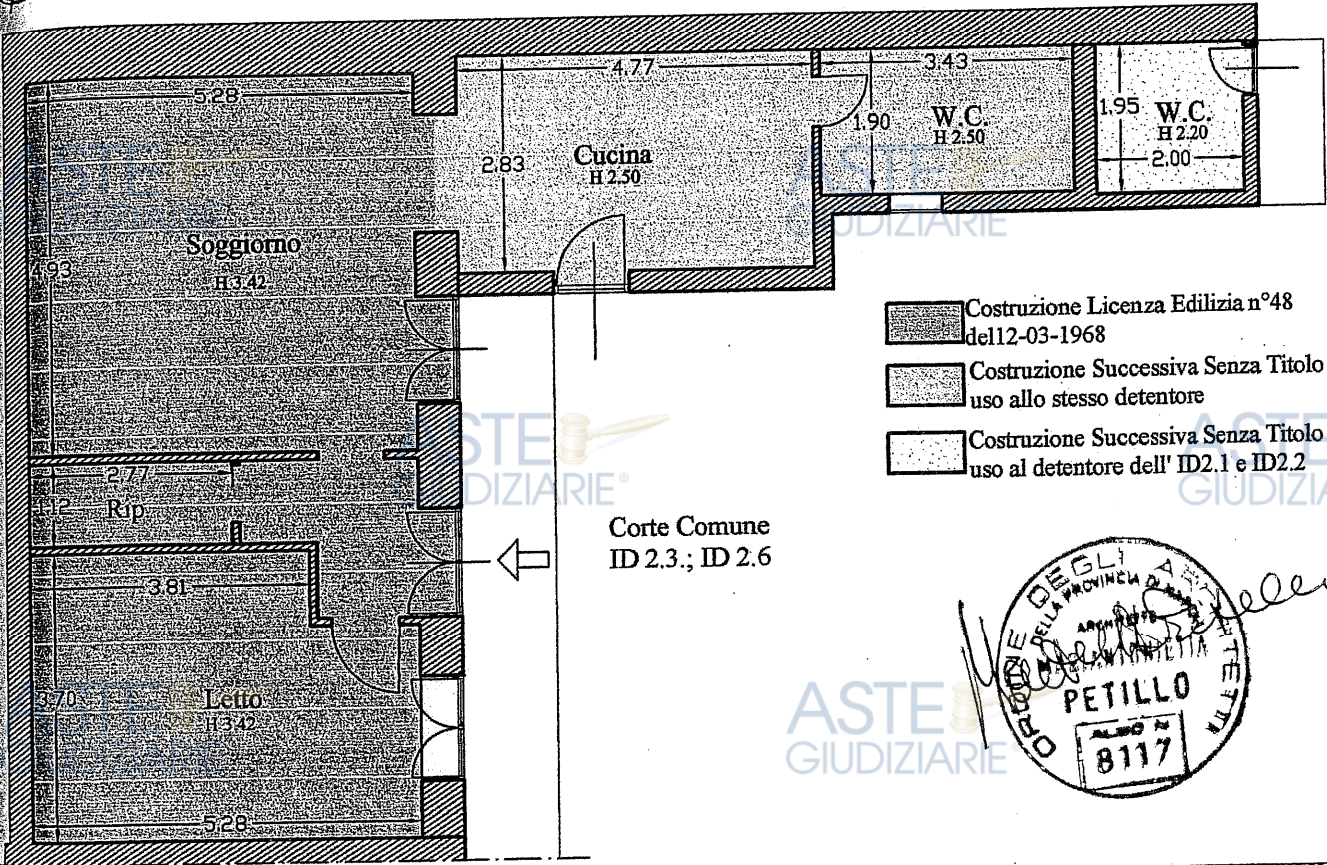
Foto 5 Deposito

**ABITAZIONE ID2.4.**

*Inquadramento  
1/500*



*Pianta 1/100*



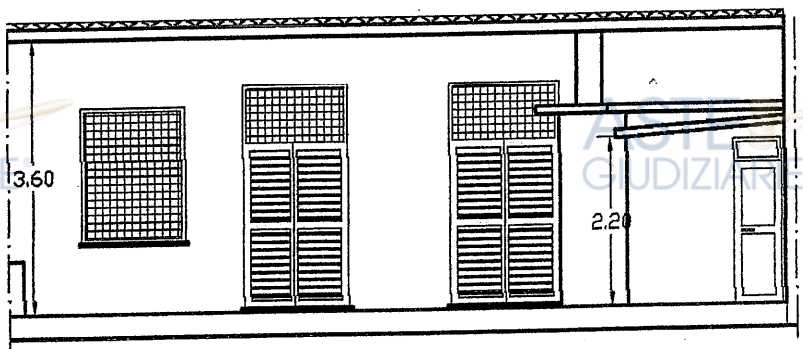
- Costruzione Licenza Edilizia n°48 del 12-03-1968
- Costruzione Successiva Senza Titolo in uso allo stesso detentore
- Costruzione Successiva Senza Titolo in uso al detentore dell' ID2.1 e ID2.2

Corte Comune  
ID 2.3.; ID 2.6

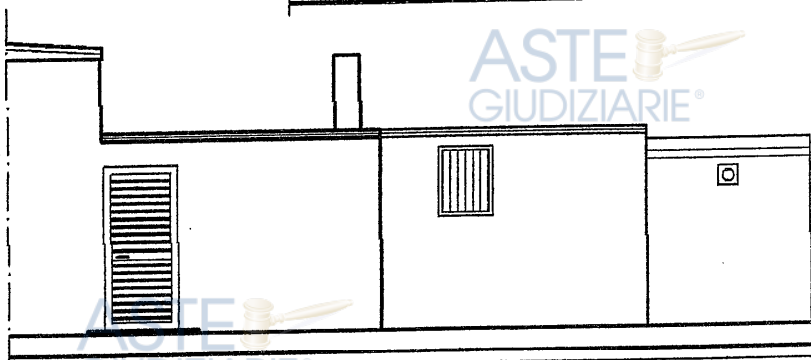


Confine ID2.5.

*Prospetto Lato Est  
1/100*



*Prospetto Lato Sud  
1/100*



REPORT FOTOGRAFICO ID 2.4..

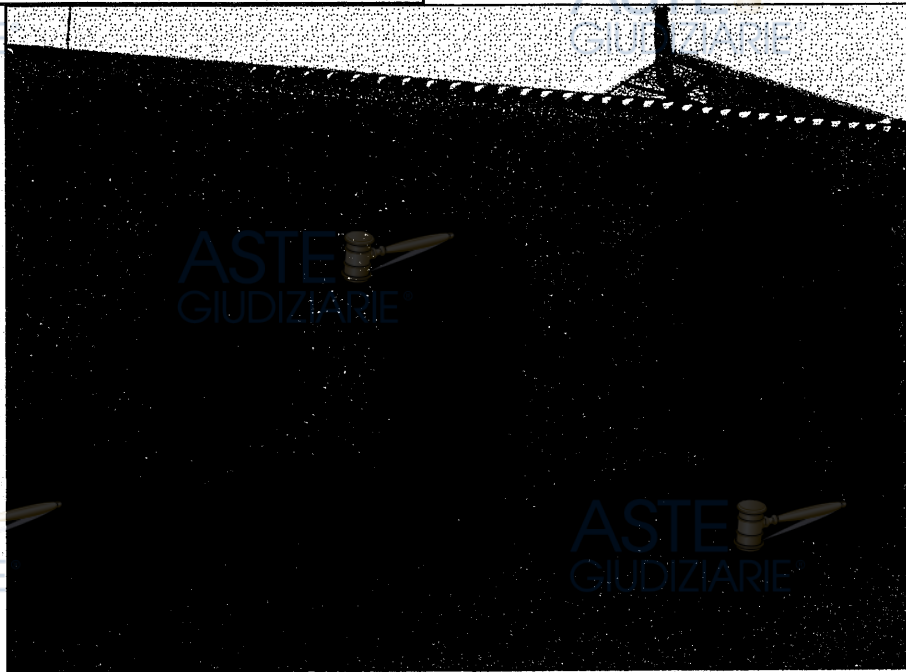
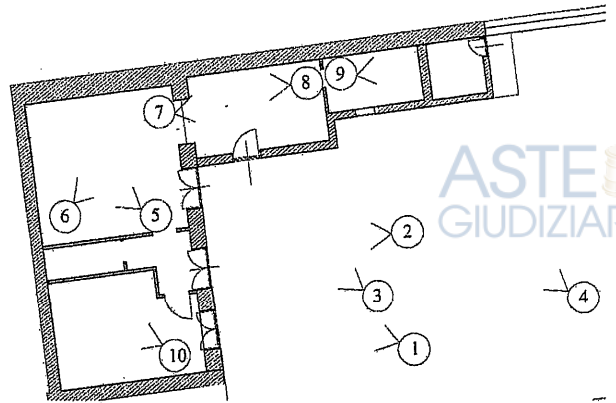
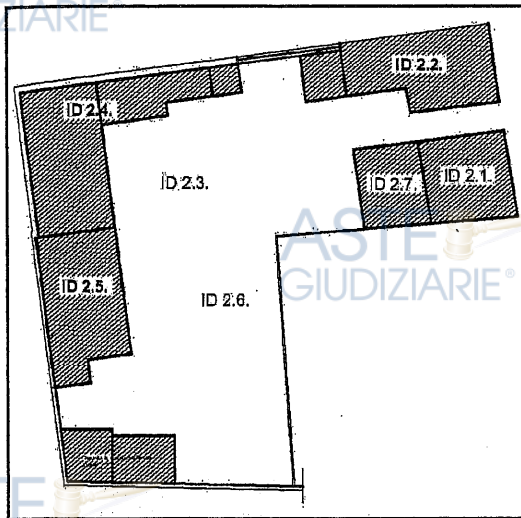


Foto 1



Foto 2



Foto 3

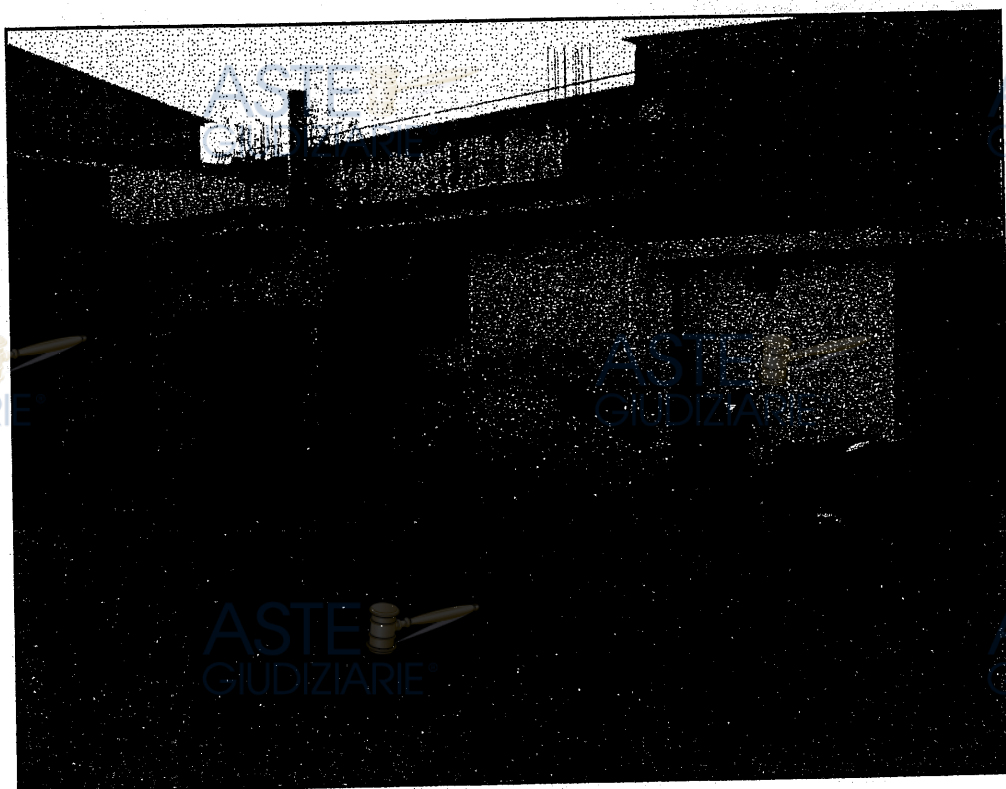


Foto 4



Foto 5

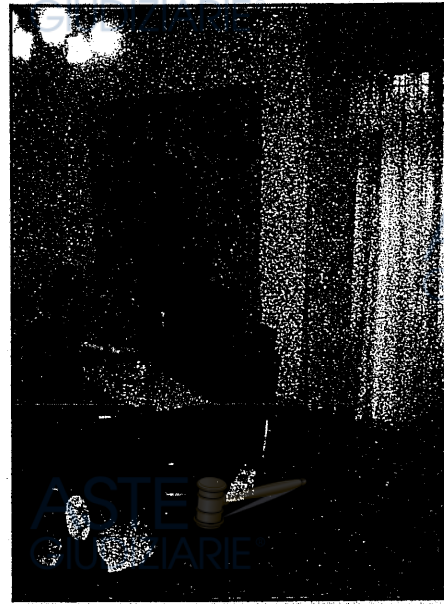


Foto 6



Foto 7



Foto 8



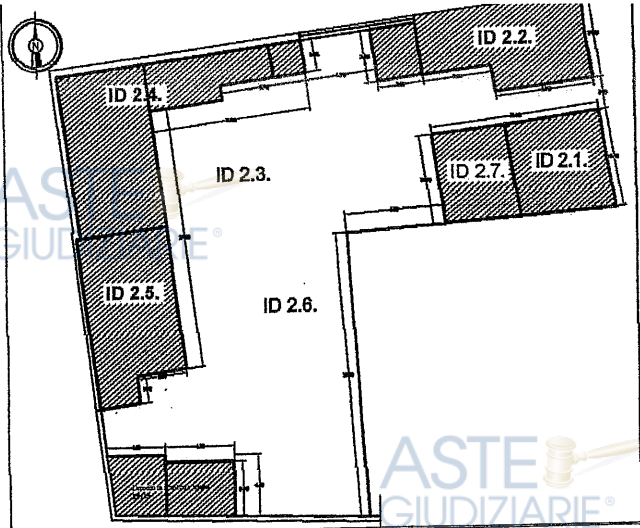
Foto 9



Foto 10

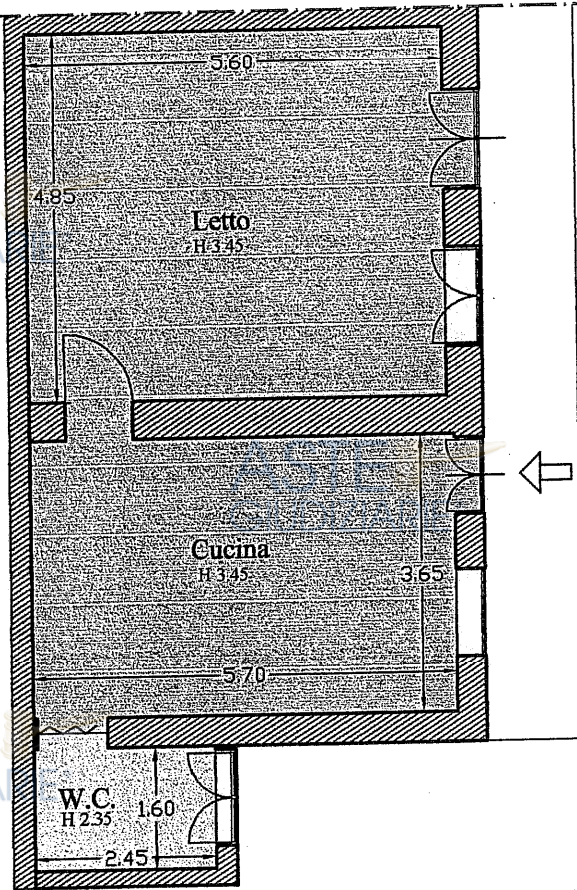
**ABITAZIONE ID2.5.**

*Inquadramento  
1/500*



Confine ID2.5.

*Pianta  
1/100*

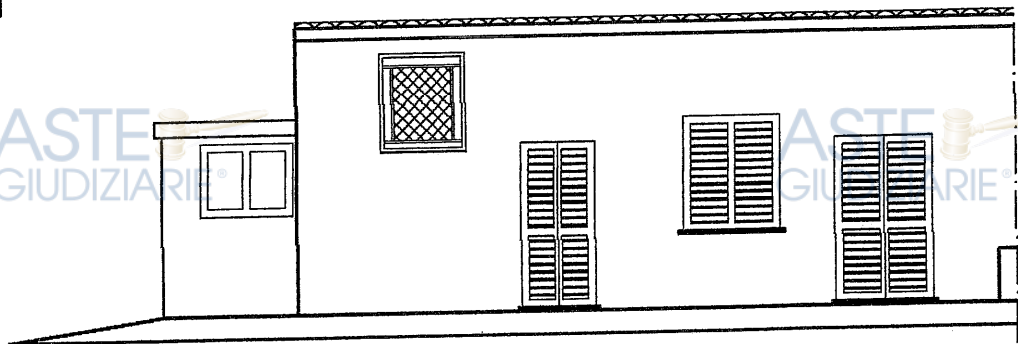


- Costruzione Licenza Edilizia n° 34 del 12-03-1978
- Costruzione Successiva Senza Titolo in uso allo stesso detentore

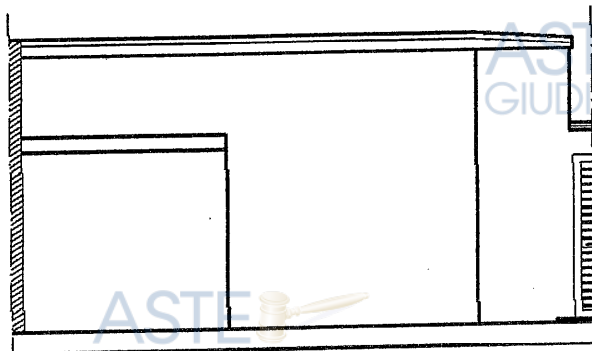
Corte Comune  
ID 2.3.; ID 2.6



*Prospetto  
Lato Est  
1/100*

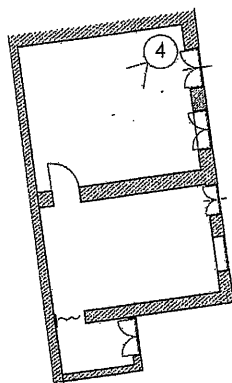
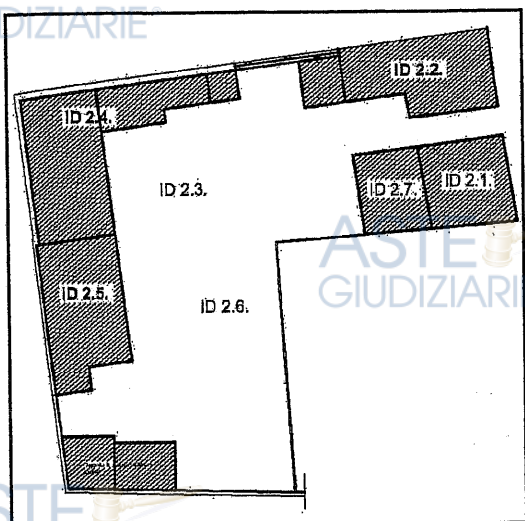


*Prospetto  
Lato Sud  
1/100*





REPORT FOTOGRAFICO ID 2.5.



①

②

③



Foto 1



Foto 2

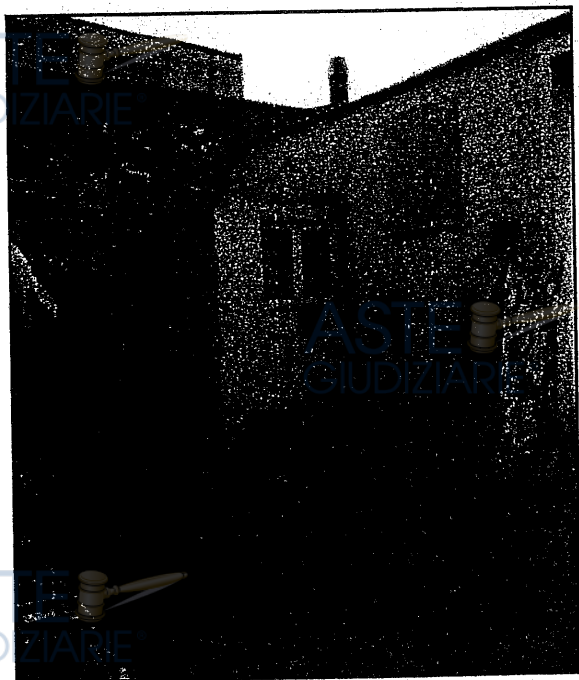
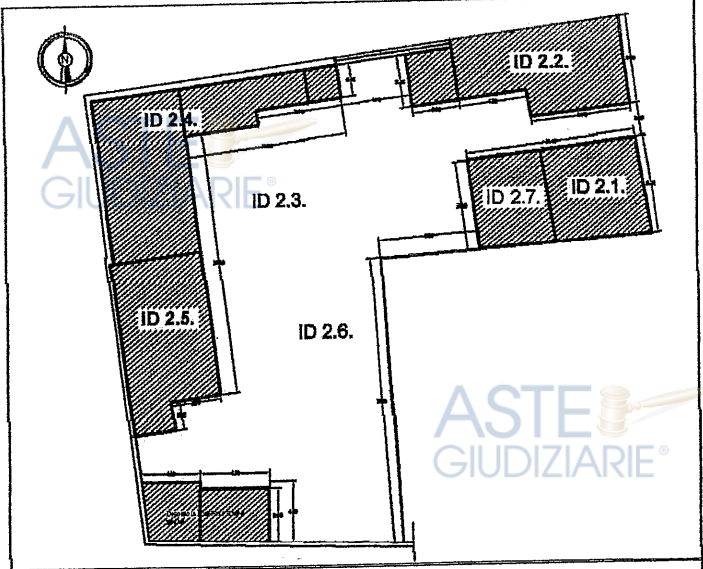


Foto 3



Foto 4

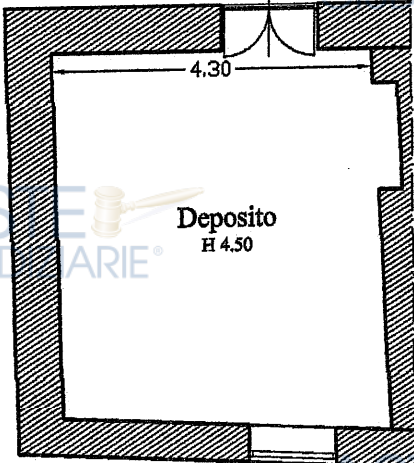
**ABITAZIONE ID2.7.**



*Inquadramento 1/500*



Viale d'ingresso alla corte comune

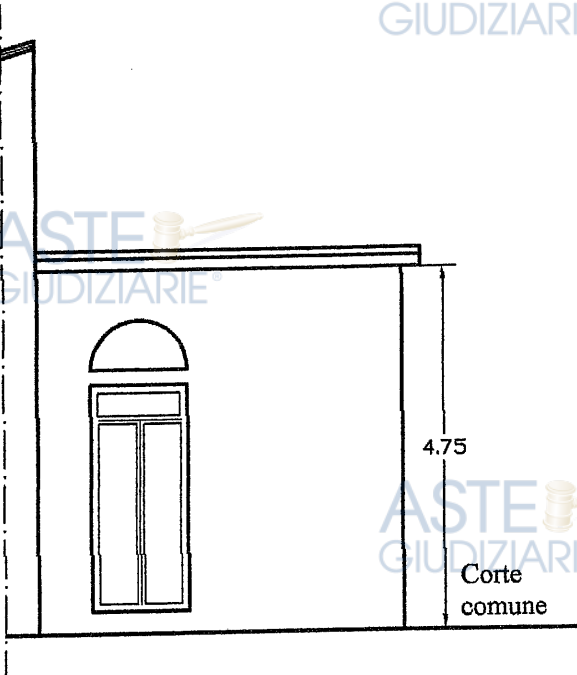


Corte Comune

Deposito  
H 4.50

Confine  
ID2.1.

*Pianta 1/100*



4.75

Corte comune

*Prospetto Lato Nord 1/100*

REPORT FOTOGRAFICO ID 2.7.

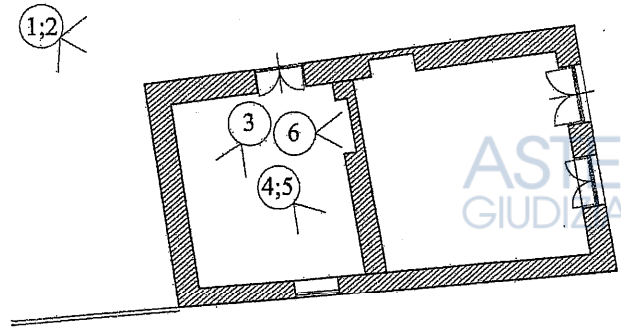
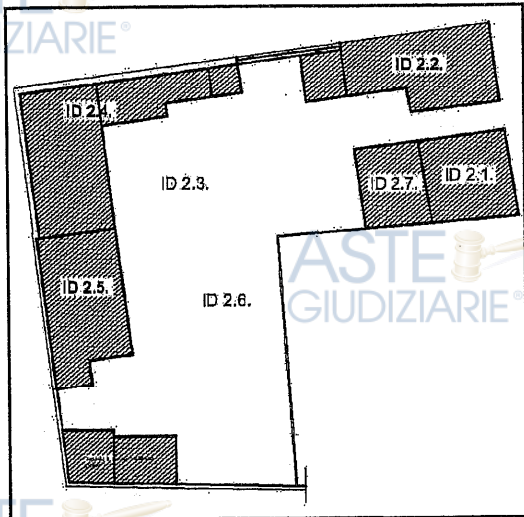


Foto 1



Foto 2

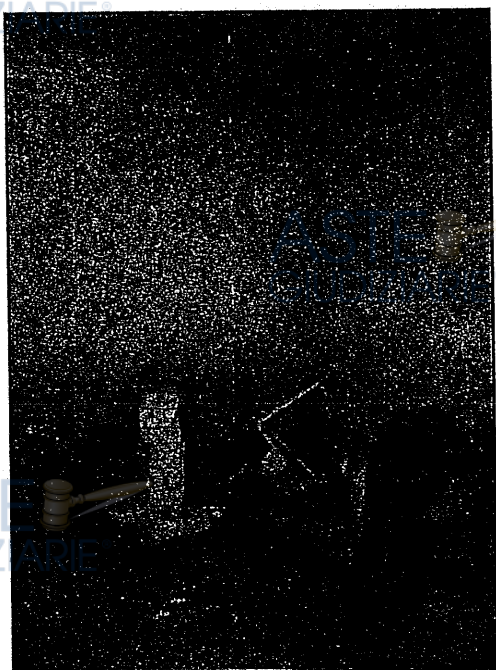


Foto 3

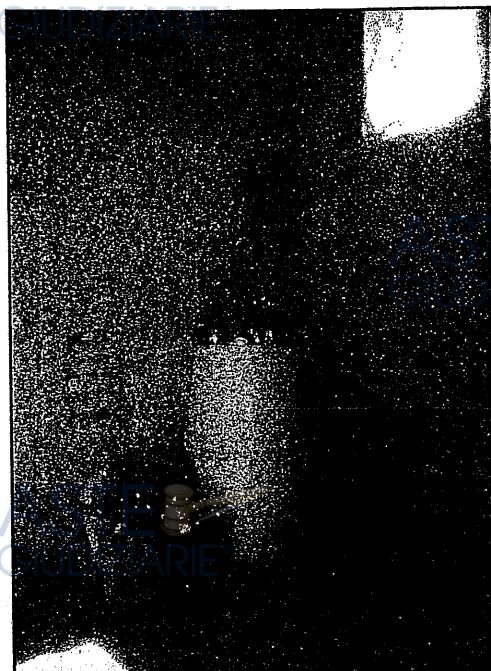


Foto 4

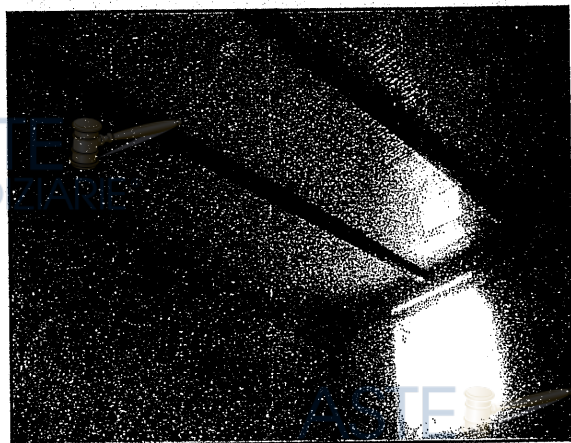


Foto 5



Foto 6